



DH_NVR4XXX-4KS2_MultiLang_
V4.001.0000005.1.R.201126
Release Notes

ZHEJIANG DAHUA VISION TECHNOLOGY CO., LTD.

Legal Information

Copyright

© 2020 ZHEJIANG DAHUA VISION TECHNOLOGY CO., LTD. All rights reserved.

This document cannot be copied, transferred, distributed, or saved in any form without the prior written permission of Zhejiang Dahua Vision Technology Co., LTD (hereinafter referred to as "Dahua").

The products described in this document may contain the software that belongs to Dahua or the third party. Without the prior written approval of the corresponding party, any person cannot (including but not limited to) copy, distribute, amend, abstract, reverse compile, decode, reverse engineer, rent, transfer, sublicense the software.

Trademarks

 and **HDCVI** are the trademarks or registered trademarks of Dahua.

All other company names and trademarks mentioned herein are the properties of their respective owners.

Disclaimer

- These release notes are for reference only, and the actual product shall prevail.
- Succeeding products and release notes are subject to change without notice.
- If there is any uncertainty or controversy, please refer to our final explanation.

Table of Contents

Legal Information	I
Release Notes	1
1.1 Overview	1
1.2 Product Introduction	1
1.3 New Features	1
1.4 Fixed Bugs	2
1.5 Instructions for New Features	2
1.5.1 One-click Arming/Disarming	2
1.5.2 New languages supported: Traditional Chinese and Japanese	3
1.5.3 PoE Enhancement Mode	4
1.5.4 Remote Initialization	4
1.5.5 Cloud Update Reminder	5
1.6 Compatibility	5
1.7 Software Environment	6
1.8 Pending Issues	8
1.9 Update Guide	8

1.1 Overview

Item	Description
Product name	Network Video Recorder
Version	V4.001.0000005.1
Software package information	DH_NVR4XXX-4KS2_MultiLang_V4.001.0000005.1.R.201126.zip
Model	DHI-NVR4104-4KS2,DHI-NVR4108-4KS2,DHI-NVR4116-4KS2,DHI-NVR4104-P-4KS2,DHI-NVR4108-P-4KS2,DHI-NVR4108-8P-4KS2,DHI-NVR4116-8P-4KS2,DHI-NVR4104HS-4KS2,DHI-NVR4108HS-4KS2,DHI-NVR4116HS-4KS2,DHI-NVR4104HS-P-4KS2,DHI-NVR4108HS-P-4KS2,DHI-NVR4108HS-8P-4KS2,DHI-NVR4116HS-8P-4KS2,DHI-NVR4208-4KS2,DHI-NVR4216-4KS2,DHI-NVR4232-4KS2,DHI-NVR4204-P-4KS2,DHI-NVR4208-8P-4KS2,DHI-NVR4216-16P-4KS2,DHI-NVR4232-16P-4KS2,DHI-NVR4416-4KS2,DHI-NVR4432-4KS2,DHI-NVR4416-16P-4KS2,DHI-NVR4432-16P-4KS2,DHI-NVR4816-4KS2,DHI-NVR4832-4KS2,DHI-NVR4816-16P-4KS2,DHI-NVR4832-16P-4KS2
Onvif Version	2.6.1
OS requirement	None
Release date	2020-11-26

1.2 Product Introduction

This product is mainly used indoors. Combined with IP cameras, you can use this NVR to complete real-time monitoring and recording. It supports configuring basic parameters by using mouse, and you can build a security monitoring network through web or other professional software developed by Dahua. Product functions include real-time monitoring, record playback, alarm and other auxiliary configuration functions.

1.3 New Features

Feature	Description
Security baseline V2.1	<ul style="list-style-type: none">● Blocked dangerous commands in the system.● Supports disabling unsafe services, and those services are disabled by default.● Important operations log.● Network data transfer encryption control.● Non-sensitive data information saved in device-end.● Secondary authentication for restoring factory defaults.● Record logs of important operations.● Added prompts of data deletion.

Feature	Description
One-click disarming	<ul style="list-style-type: none"> • Supports one-click disarming, which is disabled by default. • Supports disarming by period. Users can disarm in the set time period, and cancel disarming out of the period. • Supports individually disarm linkages such as Buzzer, Show Message, Alarm-out Port and Send Email. • The Live interface uses a bell icon on the upper-right corner of video channels to display disarming status. The intact bell icon is displayed by default, and when disarming is enabled, the bell icon is displayed with a slash. • Supports synchronizing disarming configuration from remote IPCs. • Supports enabling and disabling disarming on the upper-right corner of video channels on Live interface. • Supports one-click disarming function on client software such as DMSS client.
Traditional Chinese and Japanese	The firmware supports traditional Chinese and Japanese.
MP4 format	In video playback interface, video clip support MP4 format.
PoE enhancement mode	PoE port is limited to 10Mbps mode, which increases the transmission distance.
Display Initialization failure reason	Display error code and reason, and log when camera initialization fails.
Reset Web password	You can reset Web password through reserved mobile phone number of mailbox.
Optimized the compatibility of Private Protocol Authentication Mode.	When compatibility mode causes an abnormal IPC connection, the system prompts users to switch authentication mode.
Cloud upgrade pop-up reminder	Enable Auto-Check for Updates and System Update Notifications. When the device detects that the cloud upgrade version is available, it supports the cloud upgrade pop-up reminder function after login.

1.4 Fixed Bugs

None.

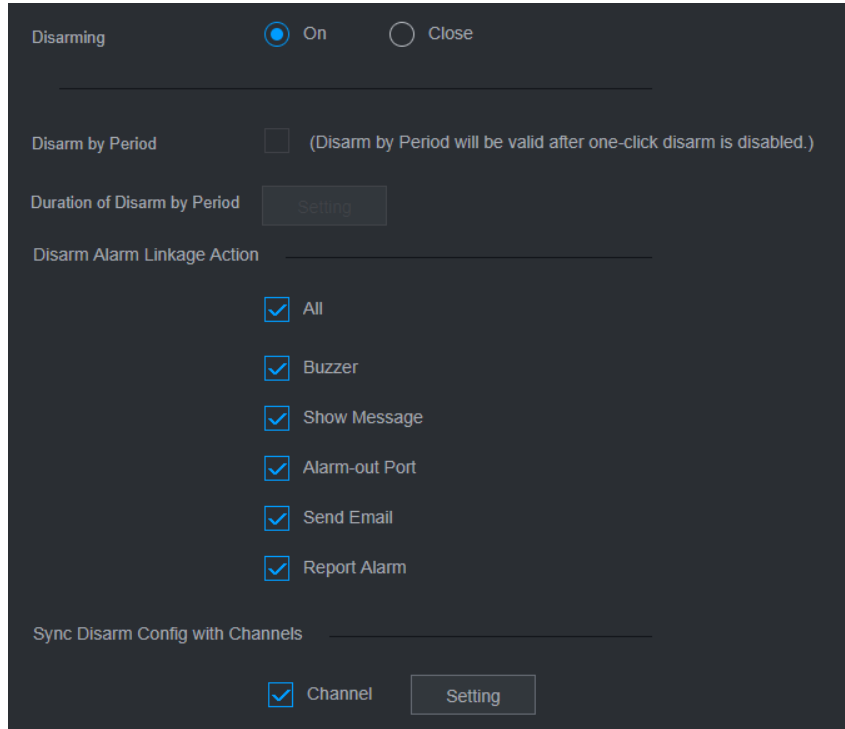
1.5 Instructions for New Features

1.5.1 One-click Arming/Disarming

Support for one-click to arm or disarm alarm linkage actions in **ALARM > Disarming**.

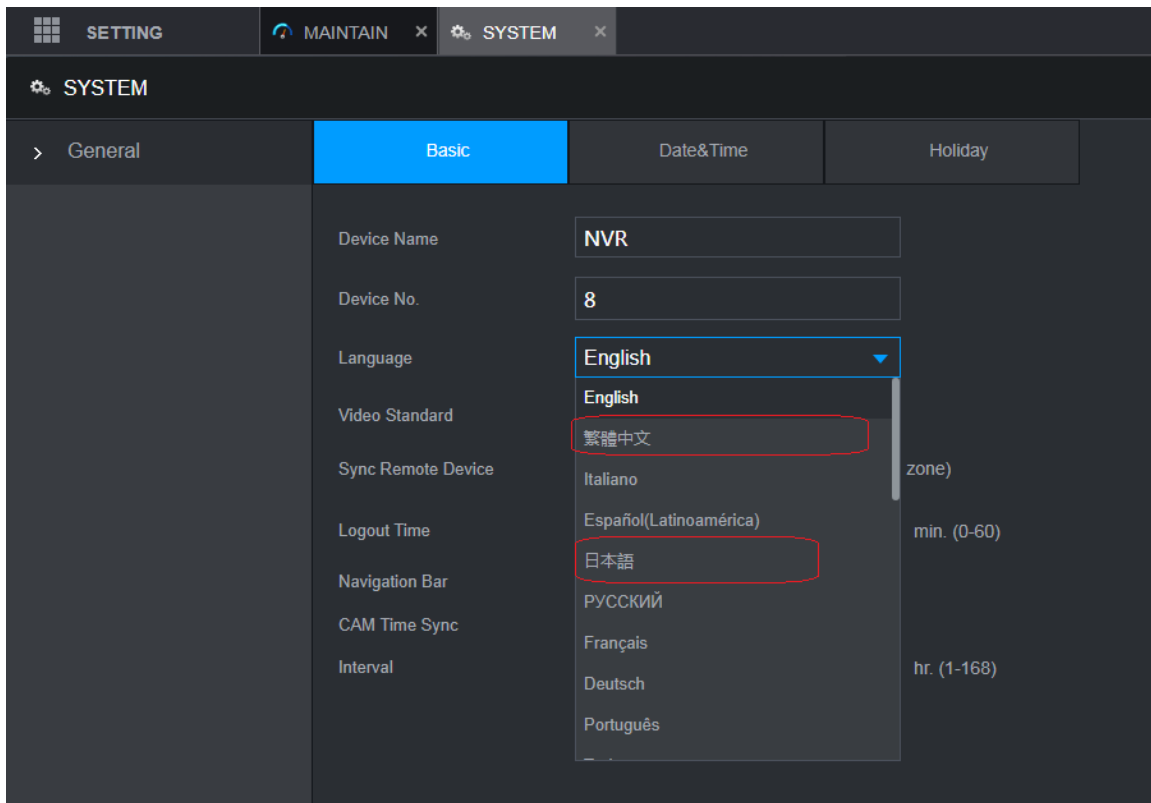
Supports disarming by period. Users can disarm in the set time period, and cancel disarming out of the period.

Supports synchronizing disarming configuration from remote IPCs.



1.5.2 New languages supported: Traditional Chinese and Japanese

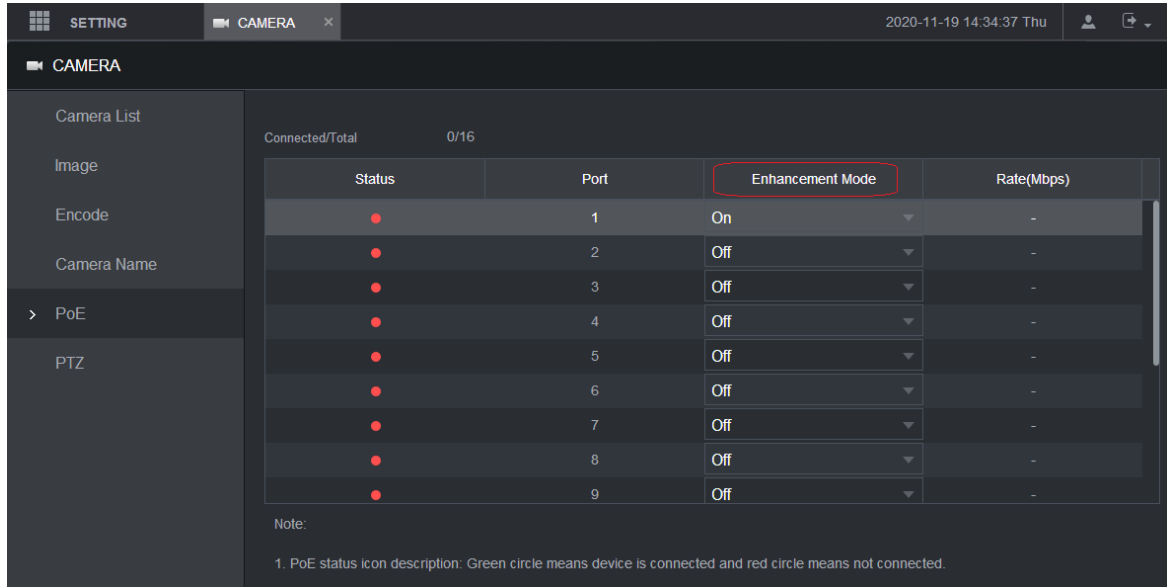
This release supports four new languages: Traditional Chinese and Japanese. You can set those languages in start-up wizard or in **SYSTEM > General > Basic**.



1.5.3 PoE Enhancement Mode

PoE port is limited to 10Mbps mode, which increases the transmission distance.

With Enhancement Mode on, the port reduces the rate to 10Mbps and has an effective transmission distance of up to 200 meters. With Enhancement Mode off, the maximum rate of the port can be up to 100Mbps. The function is disabled by default.



The screenshot shows the 'CAMERA' settings page. On the left is a sidebar with options: Camera List, Image, Encode, Camera Name, PoE (selected), and PTZ. The main area displays a table with columns: Status, Port, Enhancement Mode, and Rate(Mbps). The 'Enhancement Mode' column is highlighted with a red box. A note at the bottom explains the PoE status icon: '1. PoE status icon description: Green circle means device is connected and red circle means not connected.'

Status	Port	Enhancement Mode	Rate(Mbps)
●	1	On	-
●	2	Off	-
●	3	Off	-
●	4	Off	-
●	5	Off	-
●	6	Off	-
●	7	Off	-
●	8	Off	-
●	9	Off	-

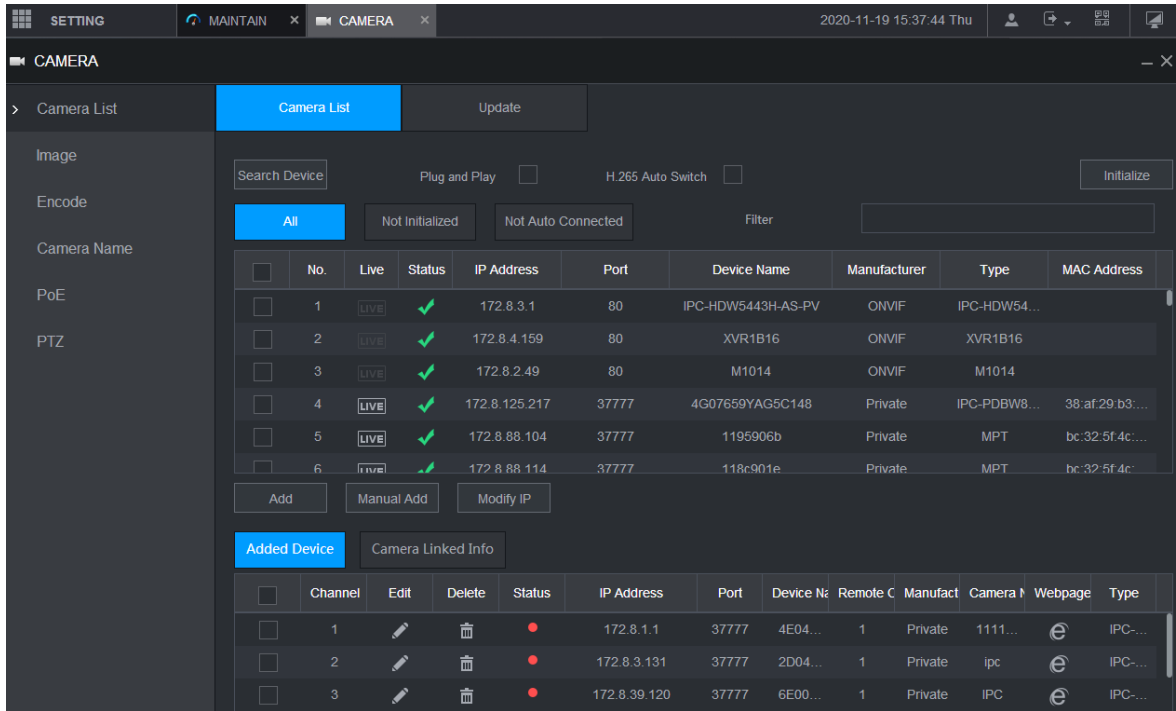
1.5.4 Remote Initialization

In **Camera List** interface, the device automatically searches, and displays the IPC. With **Plug and Play** enabled, the device automatically adds the IPC within the LAN.

- **All:** Displays all the searched devices not added.
- **Not Initialized:** Displays only the uninitialized cameras.
- **Not Auto Connected:** Indicates that the device has been automatically connected and will not be added automatically. To add it automatically, you need to remove it manually in advance.

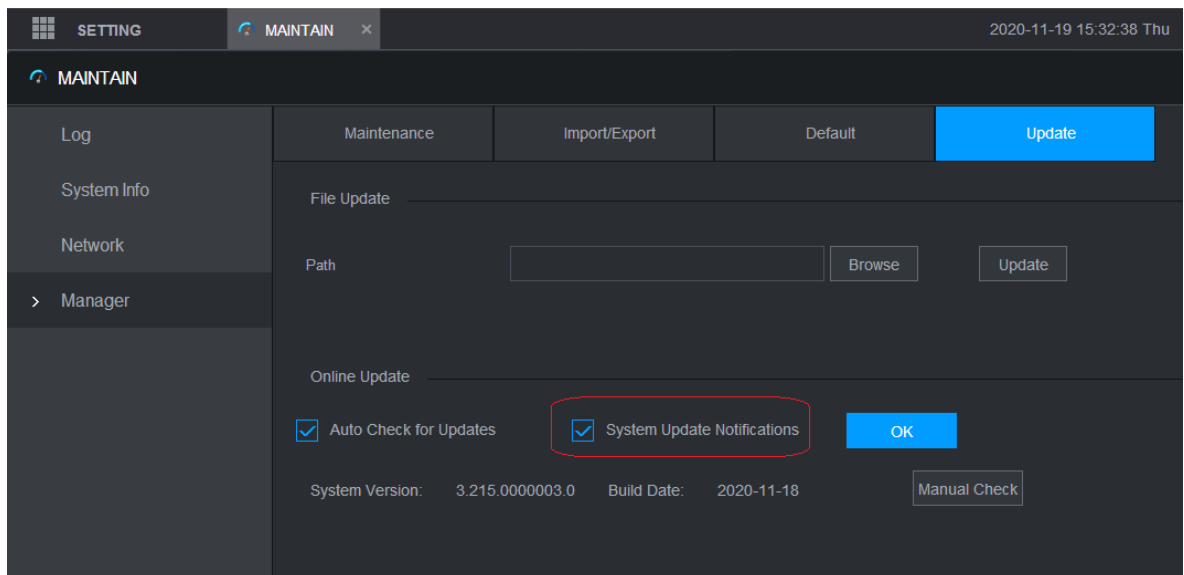
Double-click or manually add IPC, the uninitialized IPC can be initialized automatically and added to the device.

After the IPC is automatically added, if the login fails, you can re-enter the new password on the preview interface of the IPC channel.



1.5.5 Cloud Update Reminder

Enable **Auto-Check for Updates** and **System Update Notifications**. When the device detects that the cloud upgrade version is available, it supports the cloud upgrade reminder function after login.



1.6 Compatibility

This new baseline version is based on the version of Security Baseline 2.1, and it can be rolled back to the versions after Security Baseline 1.4, but cannot be rolled back to a version prior to Security Baseline 1.4.

1.7 Software Environment

Model	Version
DH-IPC-HFW2231SN-S-0280B-S2	2.6.01.05.23566 DH_IPC-HX2XXX-Molec_MultiLang_NP_V2.800.0000000.19.R.200628.zip
DH-IPC-HDW2431TP-AS-0280B-S2	2.6.01.05.23564 DH_IPC-HX2XXX-Molec_MultiLang_PN_V2.800.0000000.19.R.200628.zip
DH-IPC-HFW2531TP-ZAS-27135-S2	2.6.01.05.23552 DH_IPC-HX25(8)XX-Molec_MultiLang_PN_V2.800.0000000.19.R.200628.zip
DH-IPC-HFW2831TP-ZAS-27135-S2	2.6.01.05.23552 DH_IPC-HX25(8)XX-Molec_MultiLang_PN_V2.800.0000000.19.R.200628.zip
DH-IPC-HDW3241TN-ZAS	2.6.01.05.23053 DH_IPC-HX3XXX-Leo_MultiLang_PN_Stream3_V2.800.0000000.14.R.200612.zip
DH-IPC-HFW3441TP-ZS-27135	2.6.01.05.23055 DH_IPC-HX5(4)(3)XXX-Leo_MultiLang_PN_Stream3_V2.800.0000000.14.R.200612.zip
DH-IPC-HDBW5541EP-ZE-0735	2.6.01.05.26353 DH_IPC-HX5XXX-Volt_MultiLang_PN_Stream3_V2.800.0000000.20.R.200903.zip
DH-IPC-HFW5442EP-ZE-2712	2.6.01.05.26353 DH_IPC-HX5XXX-Volt_MultiLang_PN_Stream3_V2.800.0000000.20.R.200903.zip
DH-IPC-HDW5241TMP-AS-0280B	2.6.01.05.26353 DH_IPC-HX5XXX-Volt_MultiLang_PN_Stream3_V2.800.0000000.20.R.200903.zip
DH-IPC-HDW5241HP-AS-PV-0280B	2.6.01.05.26353 DH_IPC-HX5XXX-Volt_MultiLang_PN_Stream3_V2.800.0000000.20.R.200903.zip
DH-IPC-HCBW8442P	2.6.01.05.26353 DH_IPC-HX5XXX-Volt_MultiLang_PN_Stream3_V2.800.0000000.20.R.200903.zip
IPC-HDW8343XP-3D-S2	2.6.01.05.22462 DH_IPC-HX8XXX-Dual-Lens-Nobel_MultiLang_PN_V2.800.0000000.5.R.200525.zip
DH-IPC-PDBW5831P-B360-E4-2712	2.6.01.05.18030 DH_IPC-HX8(5)XXX-Sag_EngSpnFrn_PN_V2.800.0000000.5.R.200107.zip
DH-IPC-PDB4830P-B360-E4-0360B	2.6.01.05.18030 DH_IPC-HX8(5)XXX-Sag_EngSpnFrn_PN_V2.800.0000000.5.R.200107.zip

Model	Version
DH-PSD5631SP-B360	2.6.01.05.18030 DH_IPC-HX8(5)XXX-Sag_EngSpnFrn_PN_V2.800.0000000.5.R.200107.zip
DH-IPC-EB5531P	2.6.01.05.22928 DH_IPC-HX5X3X-Rhea_MultiLang_NP_Stream3_V2.800.0000016.0.R.200605
DH-IPC-EB5531-->DH-IPC-EB5531P	2.6.01.05.21410 DH_IPC-HX5X3X-Rhea_MultiLang_NP_Stream3_V2.800.0000015.0.R.200430.zip
DH-IPC-EBW81242P	2.6.01.05.16153 DH_IPC-EBW8XXXX-Fafnir_MultiLang_NP_Stream3_V2.800.0000000.0.R.191106.zip
DH-PSDW81642	2.6.01.05.26094 DH_IPC-PSDW8XXXL-Fafnir_EngSpnFrn_PN_Stream3_V2.800.0000000.3.R.200828.zip
DH-IPC-HCBW8442P	2.6.01.05.24482 DH_IPC-HX5XXX-Volt_MultiLang_PN_Stream3_V2.800.0000000.19.R.200709.zip
DH-IPC-HDW3449HP-AS-PV	2.6.01.05.24481 DH_IPC-HX5XXX-Volt_MultiLang_NP_Stream3_V2.800.0000000.19.R.200709.zip
DH-SD-8A1440XB-HNR	2.6.01.05.25332 DH_SD-Fafnir_MultiLang_PN_Stream3-NormalV2_V2.810.0000014.0.R.200803.zip
DH-SD5A445XAN-HNR	2.6.01.05.20206 DH_SD-Prometheus_MultiLang_PN_Stream3_V2.800.0000009.3.R.200331.zip
DH-SD49425XB-HNR	2.6.01.05.23292 DH_SD-Prometheus_MultiLang_PN_Stream3_V2.810.0000001.3.R.200608.zip
DH-SD49425XB-HNR	2.6.01.05.17936 DH_SD-Prometheus_MultiLang_PN_Stream3_V2.800.0000002.4.R.191227
DHI-VTO7541G	2.6.01.18.05583 DH_VTO75XXX_Eng_P_SIP_V1.000.0000001.7.R.200819.zip
DHI-VTO2202F-P	2.6.01.18.03843 DH_VTO2202F_MultiLang_PN_SIP_V4.410.0000000.4.R.20200221.zip
DHI-VTO6421F	2.6.01.18.02104 General_VTO64XXF_Eng_P_128M_SIP_V1.000.0000001.0.R.20190517.zip
VTO2111D-WP-S1	2.6.01.18.03905 General_VTO2111D_Eng_P_16M_SIP_V4.300.0000000.7.R.20200311.zip

Model	Version
SmartPss	2.7.05.01.00990 General_SmartPSSAC_Eng_Win64-Install_IS_V1.001.0000000.3.R.200907.zip
DSS PRO/DSS Express	2.7.01.01.00934 General_DSS-PRO_Win32_IS_V7.002.0000002.0.R.20200904.exe
DMSS	2.7.03.01.00230 General_DMSS-Android-Phone_MultiLang_Basic_IS_V1.000.0000002.2.R.200408.apk
NET SDK	2.8.01.01.01315 General_NetSDK_Eng_Win64_IS_V3.052.0000001.1.R.200514.7z
PlaySDK	2.8.01.01.01485 General_PlaySDK_Eng_Windows32_IS_V3.043.0000001.2.R.200821.zip
Player	2.8.02.01.00493 General_SmartPlayer-Win32_Eng_IS_V4.001.0000001.0.R.200916.zip
ConfigTool	2.8.02.01.00407 General_ConfigTool_ChnEng_V4.011.0000003.7.R.20200325.zip
DiskManager	2.8.02.01.00431 General_DiskManager-Win32_Eng_V1.000.0000003.2.R.200422.7z
NKB5000	2.6.01.09.00662 General_NKB5000_MultiLang_V3.212.0000001.0.R.200318.BIN
NKB1000	2.6.01.09.00655 General_NKB1000_Eng_V3.621.0000000.0.R.200302.zip

1.8 Pending Issues

None.

1.9 Update Guide

1. You can upgrade the NVR by ConfigTool, web and USB flash drive. For details, see Upgrade Guide.
2. Services such as recording and live view will be paused during the upgrade process. The NVR works normally after upgrade and rebooting.
3. The upgrade does not affect previous settings of the NVR.
4. Do not power off during the upgrade process, or the NVR will not boot up properly.

ZHEJIANG DAHUA VISION TECHNOLOGY CO., LTD.

Address: No.1199, Bin'an Road, Binjiang District, Hangzhou, P.R. China

Postcode: 310053

Tel: +86-571-87688883

Fax: +86-571-87688815

Email: overseas@dahuatech.com

Website: www.dahuasecurity.com